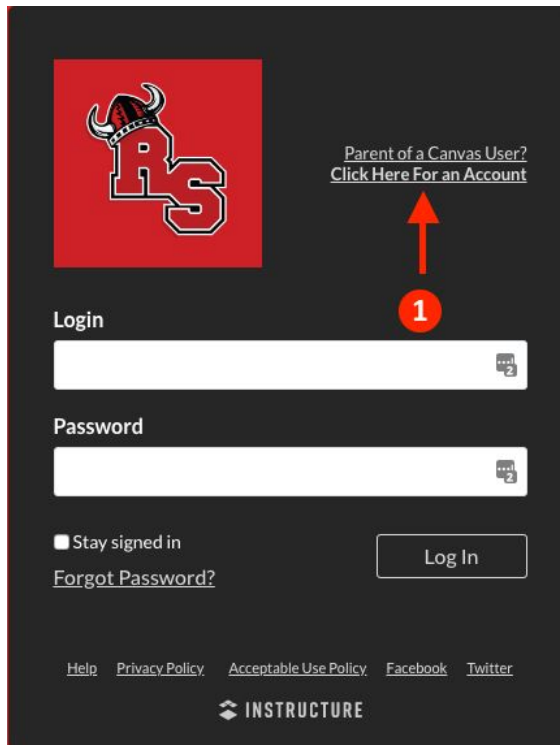


Parents go to a different login page than students. Parents will go to:

<https://rscsd.instructure.com/login/canvas>

If you already have a Canvas account with Roland-Story jump to the next page.

Create Account



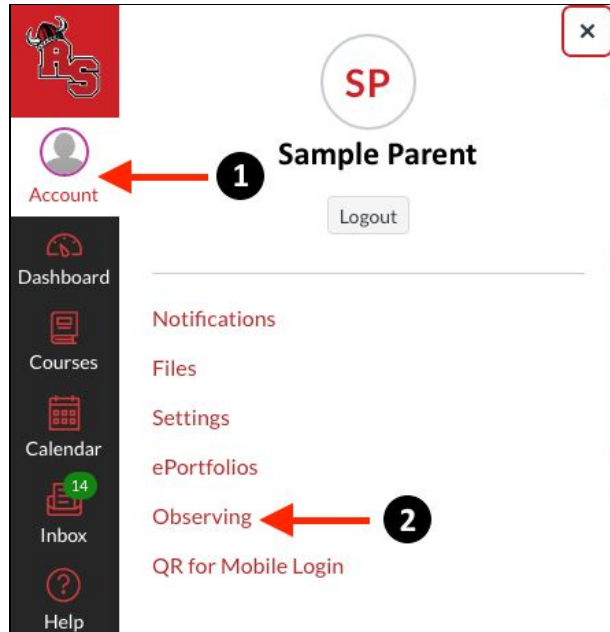
To the right of the RS logo click on **Click Here For an Account** [1].

Enter Information

Enter **Your Name** [2], **Your Email** [3], create a **Password** [4], **Re-enter Password** [5], enter the **Student Pairing Code** [6] that your student shared with you, see “*How do I generate a pairing code for my parent?*”, **Agree to the terms of use** [7], click **Start Participating** [8].

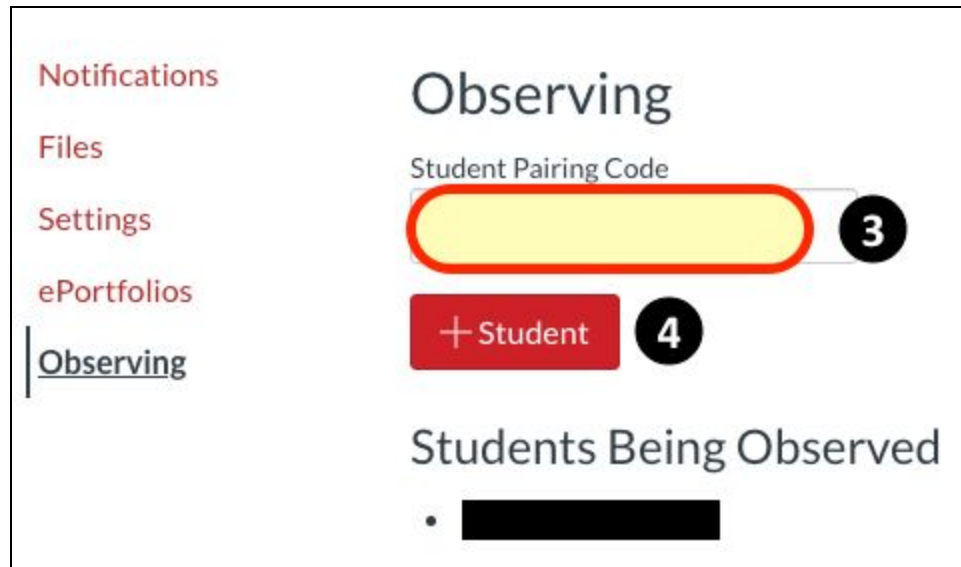
If you already have an account log in to that account.

Open Settings



On the left of your screen click on **Account** [1], then click on **Observing** [2]

Observing



Enter the six-character **Student Pairing Code** [3] that your student generated and shared with you see “*How do I generate a pairing code for my parent?*”, click the **+ Student** button [4].